

## extract: USEFUL TO KNOW ABOUT THE CS4 LAYOUT

### PURCHASE OF THE FULL BOOK

Go to [www.grygarness.com/downloads.htm](http://www.grygarness.com/downloads.htm) for more info and for book purchases. The full book is 260 pages and priced at \$38.

**This extract entitles you to an \$8 discount on the retail price from this page:**

<http://www.grygarness.com/books/9780955830341.html>

**The discount code is: PSSUPPORT**

### READING THE PDF

This is a PDF document. It's compatible with Adobe Reader 6 and newer versions, but will display best in Adobe Reader 9 or later. Get the latest Adobe Reader (free download) at <http://www.adobe.com/products/reader/>

EXCLUSIVE EXTRACT FOR PHOTOSHOPSUPPORT.COM READERS

**DIGITAL RETOUCHING FOR FASHION, BEAUTY AND PORTRAIT PHOTOGRAPHY  
in Photoshop CS4**

**GRY GARNESS**

© 2009 by Gry Garness  
Cover Photo ©Emma Cattell

Copyright © 2009 Gry Garness  
Published by Eureka Imaging Publications  
ISBN 978-0-9558303-4-1

Eureka  Imaging  
Publications

*All rights reserved. No part of this book extract may be reproduced electronically or in print in any form without the written permission.*

# USEFUL to know about the CS4 LAYOUT

## APPLICATION BAR

The **Application Bar** takes some things that are already available in the tools and Menu, placing them together in a single bar. It contains a **Bridge** button, A **View** dropdown for **Guides/Grids/Rulers** (also found in the View menu) as well as **Zoom level**, **Hand tool**, **Zoom tool** and the new **Rotate View** tool. **Arrange Documents** is also found here, as well as **Screen Mode** and the **Workspace** button. I've moved it to sit right on top of the **OPTIONS bar** in my customized workspace so that it takes up less space.

## THE APPLICATION FRAME

If you should choose **Window>Application Frame** the Photoshop app becomes a window in itself. This is the way it's always worked on the Windows platform. This is still **not** the default option on Macs.

## TABBED DOCUMENT VIEW

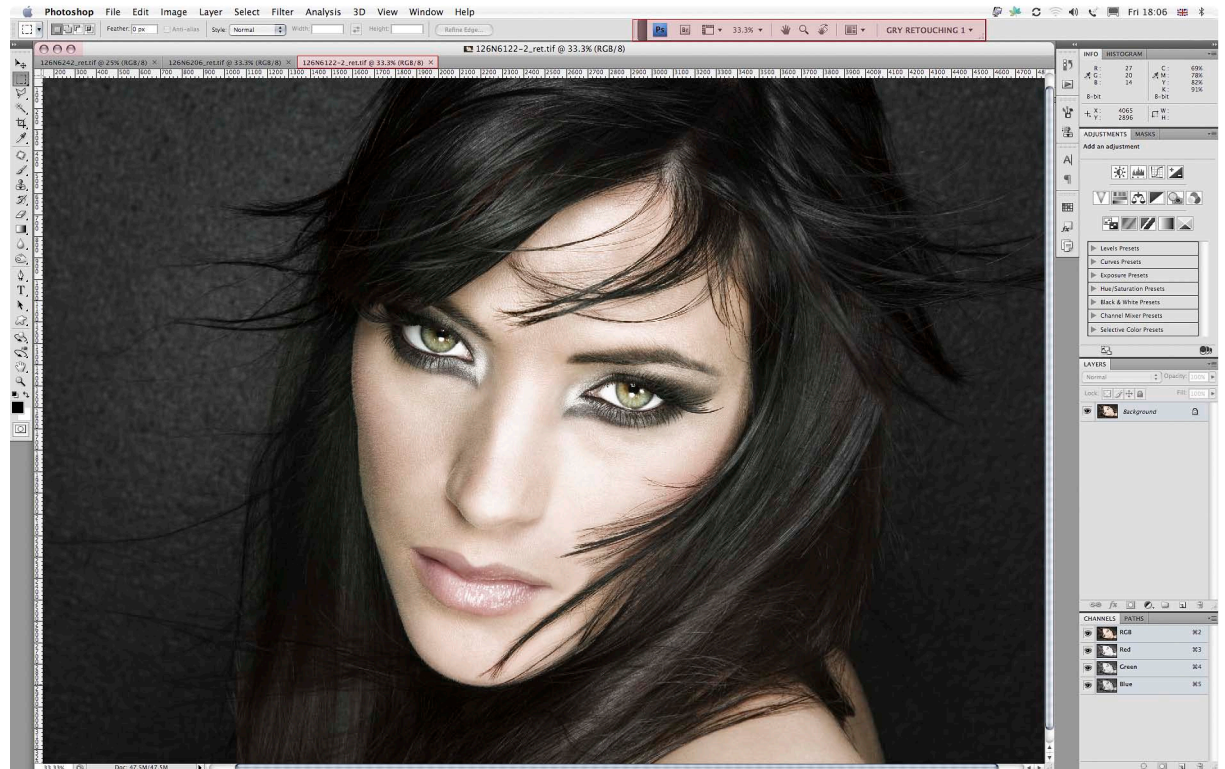
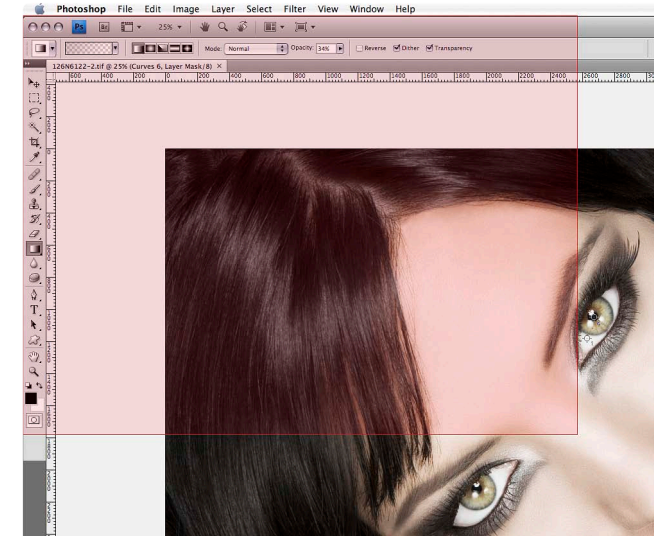
When working with more than one open document in Photoshop we now have a **tabbed documents** view, similar to some web browsers. It provides an efficient way of toggling between several documents, making a quick comparison for continuity of color and retouching, and even comparing alternative versions of the same image. Most of all, it's neat and tidy. In the screenshot on this page we actually have three documents open, with only one showing (red tab). The other tabs can be clicked on to see the other images one by one. If you need to rearrange the tabs, you can drag and drop them in the order you want. If you like to use a shortcut to toggle through the tabs, use **Control + Tab** to go forward, and **Control + Shift + Tab** (both PC and Mac) to go backwards. An image can be dragged outside the group as a free-floating window.



Above: The new **Application Bar**

Right: The **Application Frame** encompasses everything below the Menu, including panels and the tools. Compare it to the screenshot below.

Below: The full interface as I normally choose to work with it. The **APPLICATION bar** is moved into the **OPTIONS bar** and I choose to work without the Application frame. Note that there are 3 images open in tabbed view. See also the next page for a 3-up view.





# viewing MULTIPLE IMAGES in CS4

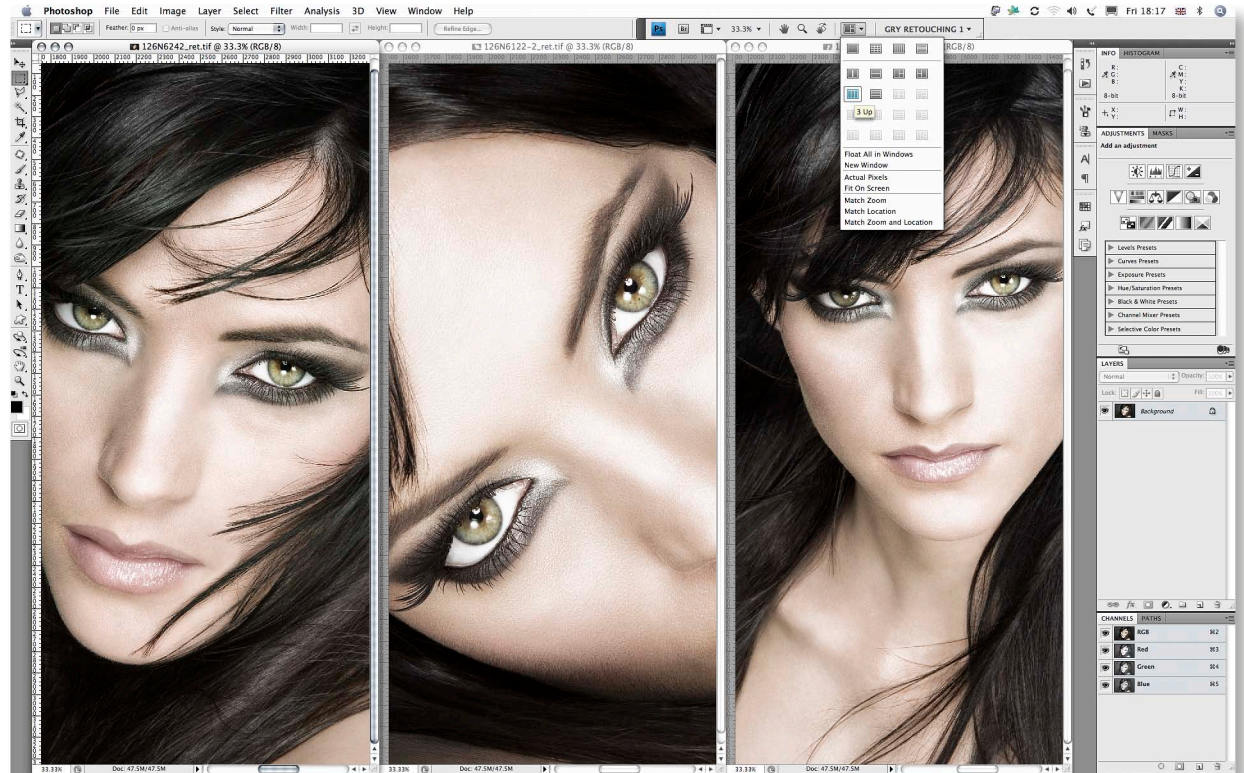
A free-floating window can even be placed on top of the Panels – something you couldn't do before. To put a floating document back into the group, drag it to the top bar, and take notice of a blue line appearing, ready for you to drop it back in as a tab. I do sometimes find it awkward that you can't turn off the tabbed behavior – even just for a single session where it's more practical to work without it. I get around it by a custom shortcut for **Window>Arrange>Float All in Windows**. You can go to the **Edit>Keyboard Shortcuts** and make your own workaround.

## ARRANGE DOCUMENTS

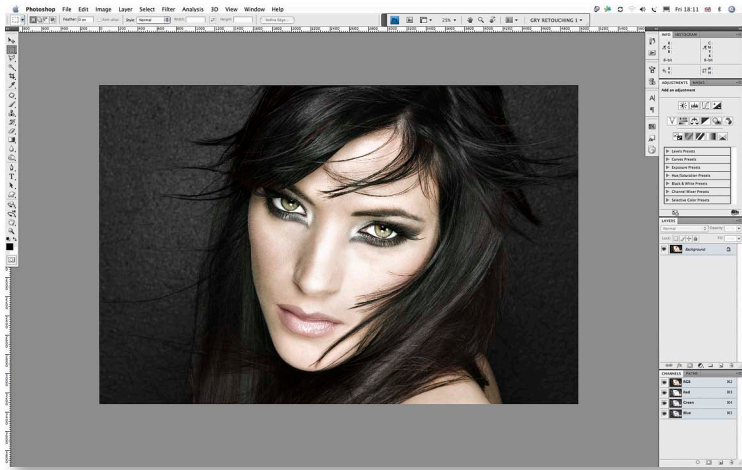
You can easily view the images in a **2-up**, **3-up** and **4-up** view. These views are selected by choosing the **Arrange Documents** button in the **Application Bar**. They open up in free floating windows. You can also match the zoom, and the location, and pan all the images at once, or individually, by holding down **Shift + Spacebar** and panning with the stylus or mouse. This is great for fashion stories, or any images in series where continuity is essential.

## DRAG-DROPPING BETWEEN TABS

When working with tabbed documents you may wonder how you can (with GPU enabled) drag and drop a layer or a selection from one image to another. Just choose the **Move** tool as you normally would, and drag the layer or selected area to the **tab** of the target document. After a very short delay, this document is brought to the front, and an **arrow with a plus sign appears**. You can either **click** where you want the item to be placed, or **shift-click** to place it **centered** in the image. You can of course copy and paste if you prefer that.



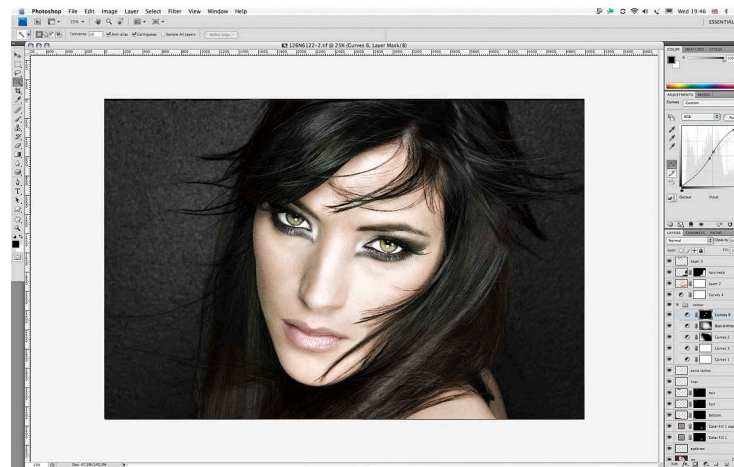
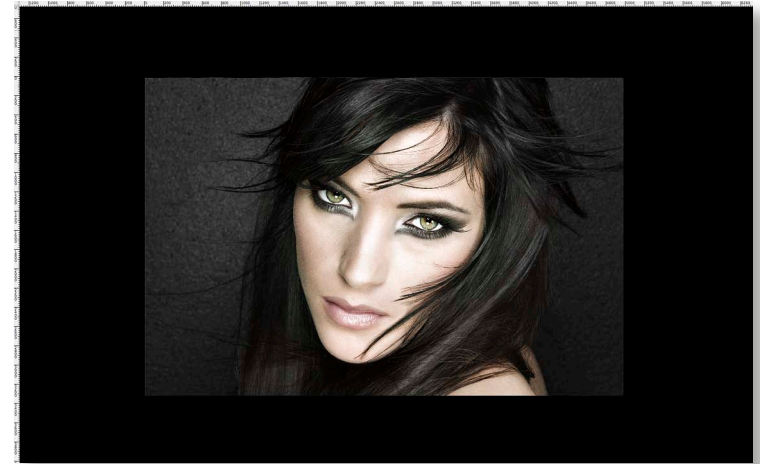
*You can separate an image from the tabs if you wish – by **dragging its tab** away from the rest. If you want all the documents separated, use **Float all in Windows**. If you change your mind, you can then **Consolidate all to Tabs**.*



Left: The **Full Screen with Menu** mode

Right: The **Full Screen Mode** without menu or Panels

Below: My customized **Standard Screen Mode** with an almost-white background.



## screen MODES

After a version of Screen Mode overload – there were 4 modes in CS3 – Photoshop has thankfully gone back to the original **three screen modes**. You can still toggle through them by pressing **F** or use the button in the Application Bar. The new thing is that you can easily customize the background color of each of them in **Preferences>Interface**. I am at the moment experimenting with the **Standard Screen Mode** at 245/245/245. This is 10 points away from absolute white, but calibrates the eyes to the detailed highlights in the image, and mimics the relationship between an exhibition image with a white matte around it, or a print on paper. At this stage I'm still experimenting, and may go even brighter. This canvas color is not set in stone, and I may find that I'll change it from one project to the next. The default gray for the **Full Screen With Menu** mode is the perfect background for most color corrections. The Full Screen mode is where I personally do the bulk of the work on individual images. The **Full Screen (without Menu) black**

color is great for assessing contrast, and to judge if the image stands up to it, or just looks milky and flat. Between these three views I can get a pretty good sense of how the image will present itself in a different environment from the screen. Note that the black Full Screen without menu mode is also without Panels – oops Panels – but if you hover the cursor over the right edge of the screen they pop up temporarily.

In Standard Mode you may have noticed a new **asterisk\*** appearing after the name and mode at the top of the document. If you see one, it indicates that the **document is unsaved**. If you see an asterisk within the inverted commas, it means the document profile does not match the color working space. This is not a new thing – it's been around for several versions.